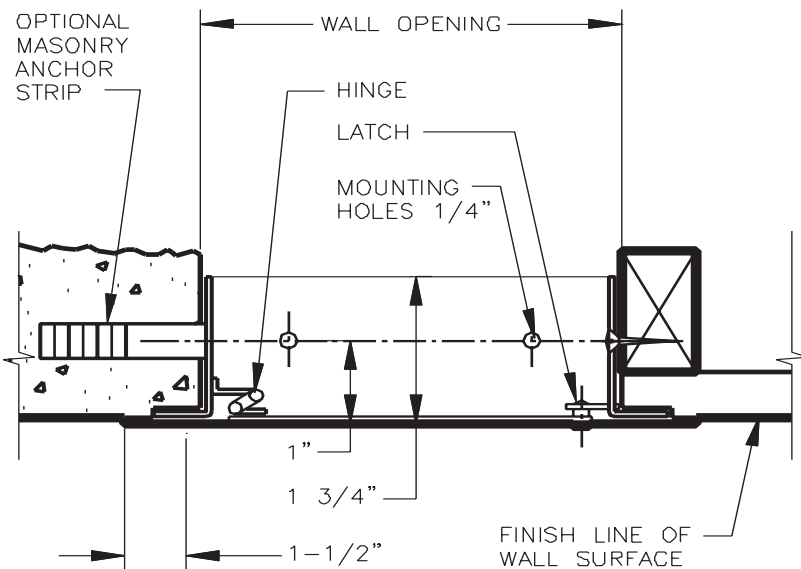
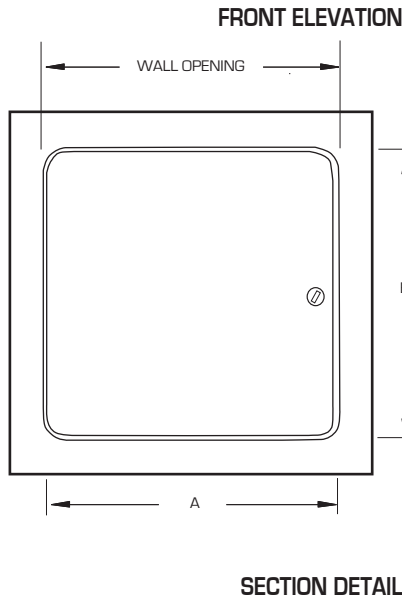
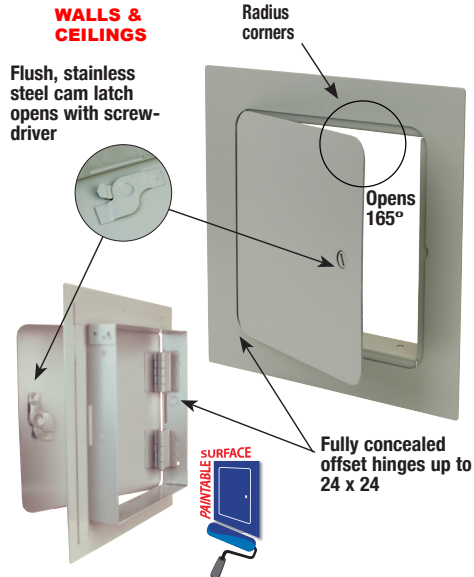


BEST in Quality! GOOD in Price!

SUBMITTAL SHEET



This precision-flush access door for wall and ceiling installation far surpasses other doors. Laser cut from one sheet of cold rolled steel, no corner mitering – aesthetically preferred by architects and building professionals.

RELATED PRODUCTS



BETTER in Quality! BETTER in Price!

WB UAD 200 Series Utility Access Door



GOOD in Quality! BEST in Price!

WB Basic 300 Series Access Door

Project: _____ Date: _____

Contractor: _____ Architect: _____

Sizes: _____ Quantity: _____ App Initials: _____

SPECIFICATIONS:

- Door: 14 ga. steel with radius corners
- Trim: 18 ga. steel
- Finish: Primed grey baked enamel, paintable surface
- Latches: Flush, stainless steel cam latch
- Hinges: Fully-concealed hinge up to and including 24 x 24. Allows opening to 165°, **Over 24 x 24 is semi-concealed allowing 180°**

ALSO AVAILABLE: (visit our website for submittals)

- **WB GP 101 Series Draftstop Premium Access Door** with draft resistive neoprene gasket on all 4 sides.
- **WB GP 102 Series Close Assist Premium Access Door** with Ultra lock, interior slam catch, and self-assisted closing.

OPTIONS (at additional cost)

- Finishes:**
- Stainless Steel Type 304 No. 4 Satin Finish Brushed
 - Stainless Steel Type 316 No. 4 Satin Finish Brushed
- Options: (additional cost)**
- WB 151 Key Code Cylinder locks-keyed alike with 2 keys per lock
 - Primed white enamel
 - Mortise Best Lock and locks by others
 - Special sizes available

✓	Model No.	Door Size W x H	Wall Opening	Cam Latches	Ship Wt. Lbs.
	GP 100	6 x 6	6 1/4 x 6 1/4	1	4
	GP 100	8 x 8	8 1/4 x 8 1/4	1	5
	GP 100	8 x 12	8 1/4 x 12 1/4	1	6
	GP 100	8 x 16	8 1/4 x 16 1/4	1	8
	GP 100	10 x 10	10 1/4 x 10 1/4	3	6
	GP 100	12 x 12	12 1/4 x 12 1/4	3	8
	GP 100	12 x 16	12 1/4 x 16 1/4	3	10
	GP 100	12 x 18	12 1/4 x 18 1/4	3	11
	GP 100	12 x 24	12 1/4 x 24 1/4	4	15
	GP 100	14 x 14	14 1/4 x 14 1/4	3	10
	GP 100	14 x 24	14 1/4 x 24 1/4	3	14
	GP 100	16 x 16	16 1/4 x 16 1/4	3	13
	GP 100	16 x 20	16 1/4 x 20 1/4	3	16
	GP 100	16 x 24	16 1/4 x 24 1/4	4	17
	GP 100	18 x 18	18 1/4 x 18 1/4	3	14
	GP 100	18 x 24	18 1/4 x 24 1/4	4	18
	GP 100	18 x 36	18 1/4 x 36 1/4	5	29
	GP 100	20 x 20	20 1/4 x 20 1/4	3	17
	GP 100	20 x 24	20 1/4 x 24 1/4	4	21
	GP 100	20 x 30	20 1/4 x 30 1/4	4	23
	GP 100	22 x 22	22 1/4 x 22 1/4	4	22
	GP 100	22 x 24	22 1/4 x 24 1/4	4	23
	GP 100	22 x 30	22 1/4 x 30 1/4	4	25
	GP 100	22 x 36	22 1/4 x 36 1/4	5	32
	GP 100	24 x 24	24 1/4 x 24 1/4	4	24
	GP 100	24 x 30	24 1/4 x 30 1/4	4	27
	GP 100	24 x 36	24 1/4 x 36 1/4	5	35
	GP 100	24 x 48	24 1/4 x 48 1/4	6	43
	GP 100	30 x 30	30 1/4 x 30 1/4	6	32
	GP 100	30 x 36	30 1/4 x 36 1/4	6	39
	GP 100	32 x 32	32 1/4 x 32 1/4	6	35
	GP 100	36 x 36	36 1/4 x 36 1/4	7	44
	GP 100	36 x 48	36 1/4 x 48 1/4	8	57
	GP 100	48 x 48	48 1/4 x 48 1/4	12	70

Corp Off: 1330 Progress Drive • Front Royal, VA 22630 • Phone: 1-800-255-5515 • Fax: 1-800-822-5001 www.wbdoors.com



Distributed by: **cannon sales inc**

W: www.cannonsales.com P: 800-368-0542